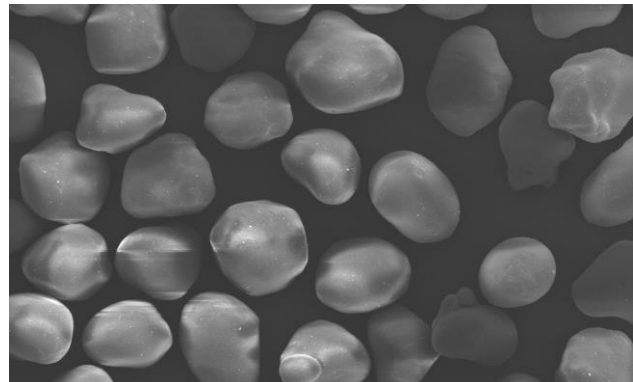
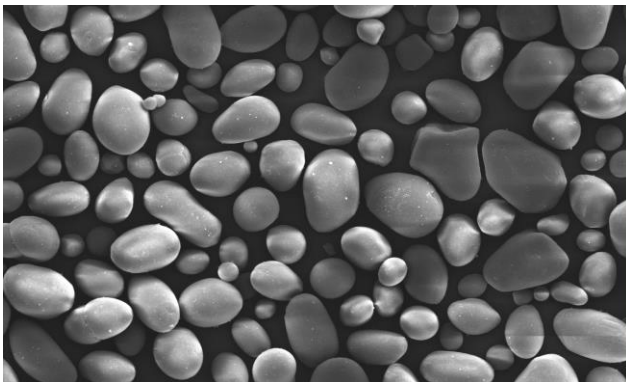
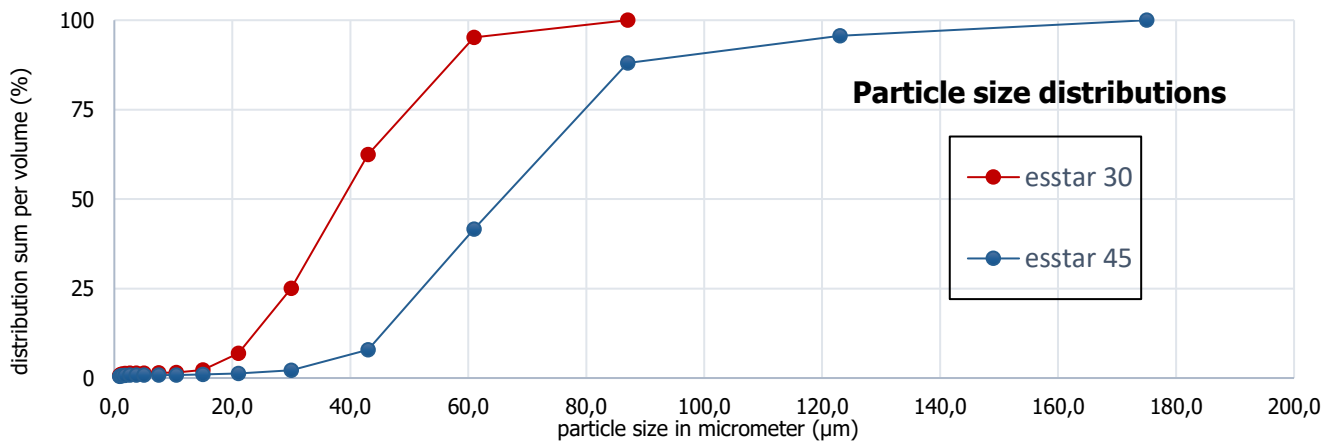


esstar (plus)

Separating powder from native starch for sensitive glass surfaces

Physical - chemical data*

max. content of moisture	20,0 %	Protein content	0,1 - 0,5 %
pH value	5,0 - 7,5	Ash content	< 0,4 %
Density	1,45 - 1,48 g/cm ³	Fat Content	0,1 - 1,1 %
Bulk density approx.	660 - 910 g/l	Molecular weight	10 ⁵ - 10 ⁸ g/ml
Decomposition temperature	240 - 310 °C	insoluble in water up to	110 °C
Specific heat release	1,2 - 1,9 kJ/kg K		



Benefits

- round and soft particles for transport and storage of sensitive glass surfaces
- e.g. for coated glass or mirror glass
- also suitable for the laminating process in the autoclave
- excellent particle sorting, very low dust content
- excellent distribution and adhesion to the glass surface
- application with all nozzle applicators and roller systems possible
- regrowing raw material / no microplastics
- available in a regular and a surface-treated (hydrophobic) version

**The given values are analysis values of a single, representative laboratory sample and therefore do not represent a specification. Since it is a purely natural product that is subject to structural changes during growth, slight deviations from the given values are possible.*